



Supplier components CTP (TE) & PTC identification and implementation procedure

1. 目的 Purpose

This document has been developed to define how to identify TE supplier component CTP (TE) & PTC and how to implement the control in TE supplier and TE.

2. 范围 Scope

This procedure apply to TE Connectivity Automotive China A type supplier.

3. 相关文件 References

Supporting references mentioned throughout this document.

Ref #	Doc. #	Title	Filename / Location
1	102-86054	Supplier Quality Assurance Manual	DM.Tec
2	GAD-CN-0200	Supplier Feasibility Study Form	DM.Tec
3	102-86007	Purchasing Procedure	DM.Tec
4	GAD-CN-0105	Special characteristics list	DM.Tec

4. 定义 Definitions

a) 缩写 Acronyms

Acronyms	Acronyms Meaning
CTP	Customer Touch Point
PTC	Pass Through Characteristic
SQE	Supplier Quality Engineer
MDE	Mould Design Engineer
DDE	Die Design Engineer
PM	Project Manager
PE	Product Engineer
PSE	Process Engineer
SLP	Safe Launch Process

b) 定义 Definitions

Terms	Definitions
CTP (TE)	Characteristics which will be touched in TE process
PTC	Characteristics which will be touched in TE customer process but not be touched in TE process
Master CTP(TE) & PTC list	For some product family or same type product, make one CTP(TE) & PTC list, called master CTP(TE) & PTC list

5. 变更历史 Revision Changes

Rev. #	Revision Date	Author	Approver	Change contents
A	11 04 2016	David Zhu	Kelly Long	New
B	13 04 2017	David Zhu	Kelly Long	Main change is CTP(TE)&PTC identification time
C	12 09 2018	Lily Fu	David Zhu	Add Supplier SC,CTP(TE)&PTC List Format
D	04 30 2021	Claire Xu	David Zhu	Add SC,CTP(TE)&PTC List publish way

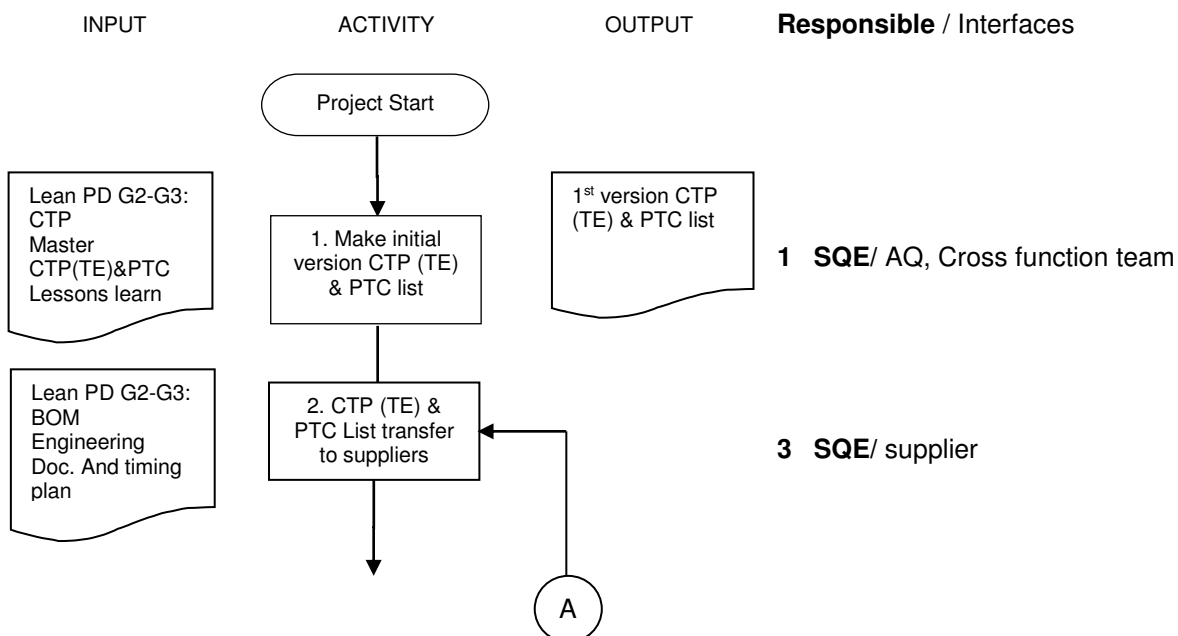
6. 记录 Record Requirements

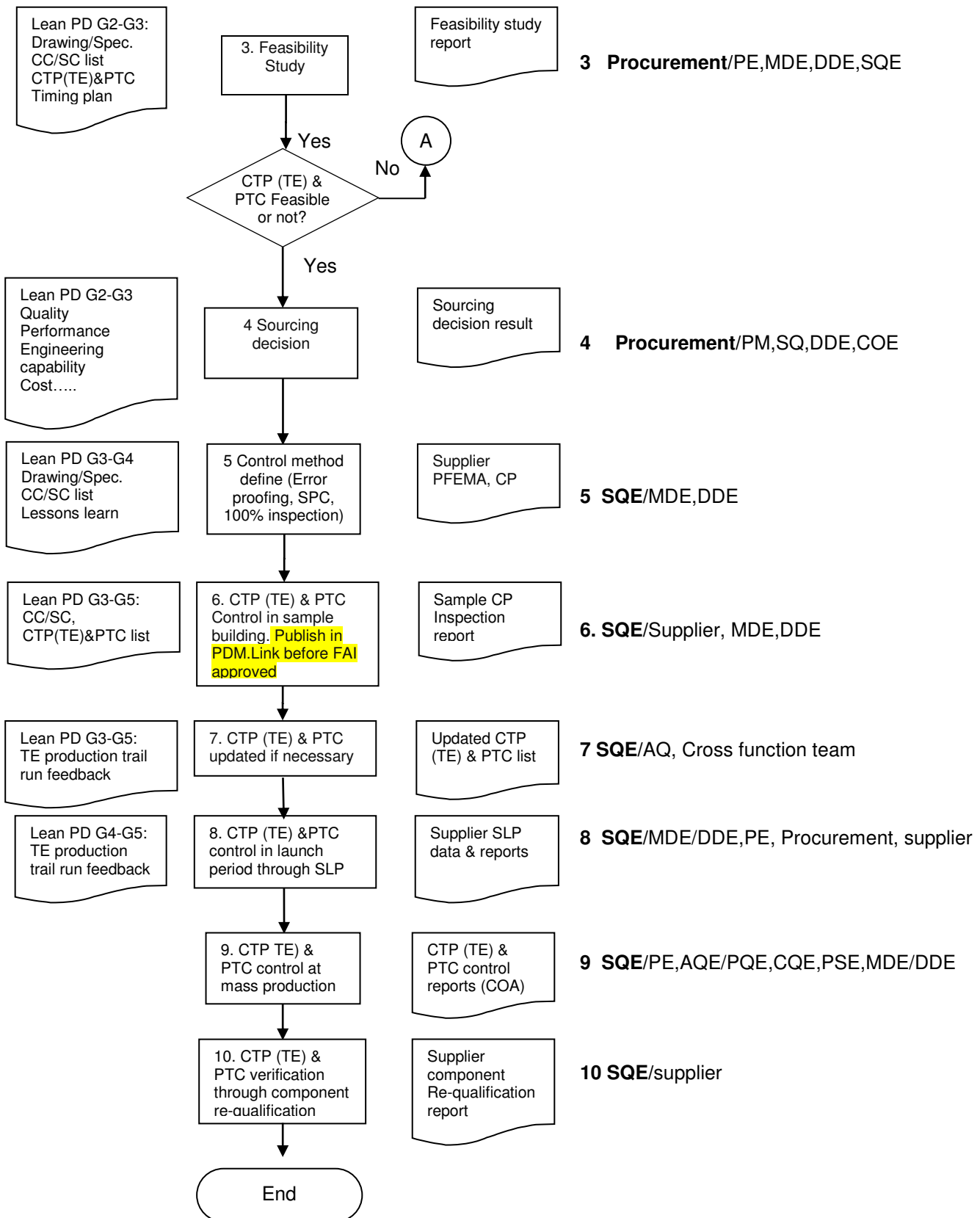
No	Record No	Record Name	Record completed by	Retention period	Record Retention owner	Retention medium
1	GAD-CN-0200	Supplier feasibility report	Supplier	15 years	SQE	Electronics
2	GAD-CN-0105	SC,CTP(TE)&PTC List	Supplier	Product life+1years	SQE	Electronics

7. 测量指标 Measure Of Performance (MOP's)

Measurable	Unit	Frequency	Reporting Tool
Customer Complaint per month	Pcs	Every Quarter	Supplier scorecard
Lots Rejection per month	DLPM	Every Quarter	Supplier scorecard
Production Complaint per month	DPPM	Every Month	SQE monthly report

8. 流程 Process Description





9. Notes for Flow Chart:

1. Make initial version CTP(TE)&PTC list

SQE need make initial version CTP(TE) & PTC list, if no input from AQ about PTC and no related lessons learn, SQE will use the master CTP(TE) & PTC list. The initial version should be ready by G3 gate.

2. CTP (TE) & PTC List transfer to suppliers

SQE need transfer CTP(TE)&PTC list to suppliers before sourcing decision, if no updated list, supplier should follow master CTP(TE)&PTC for feasibility study.

3. Feasibility Study

Procurement should arrange the feasibility study, and CTP(TE)&PTC should be studied in the feasibility study. If the result is unfeasible, need re-study or change supplier until feasible.

4. Control method define

The control method for CTP (TE) & PTC should be: 1st option is error proofing, 2nd option is SPC, 3rd option is 100% inspection or other accepted method

5. CTP (TE) & PTC Control in sample building

During sample building, supplier should make sure CTP(TE)&PTC is included in sample CP and provide inspection report to TE. SQE(ASQ) should publish SC/CTP(TE) & PTC list to DM.Tec before FAI approved, by record NO GAD-CN-0105.

6. CTP (TE) & PTC update if necessary

During G4-G5, if AQ has PTC update to SQ or based on TE production line study, or PE has SC/CC update to SQE(ASQ), SQE(ASQ) need to update the SC/ CTP(TE) & PTC list in PDM.Link. After G5, SQE also need update SC/ CTP(TE) & PTC list if any characteristic changed.

7. CTP (TE) & PTC control in launch period through SLP

In safe launch stage, CTP (TE) & PTC should be controlled and the result should be reported in supplier SLP report.

8. CTP (TE) & PTC control in mass production

CTP (TE) & PTC should be controlled according to CP and reported in supplier COA for each shipment.

9. CTP (TE) & PTC verification through component re-qualification

CTP (TE) & PTC should be included in supplier component re-qualification.