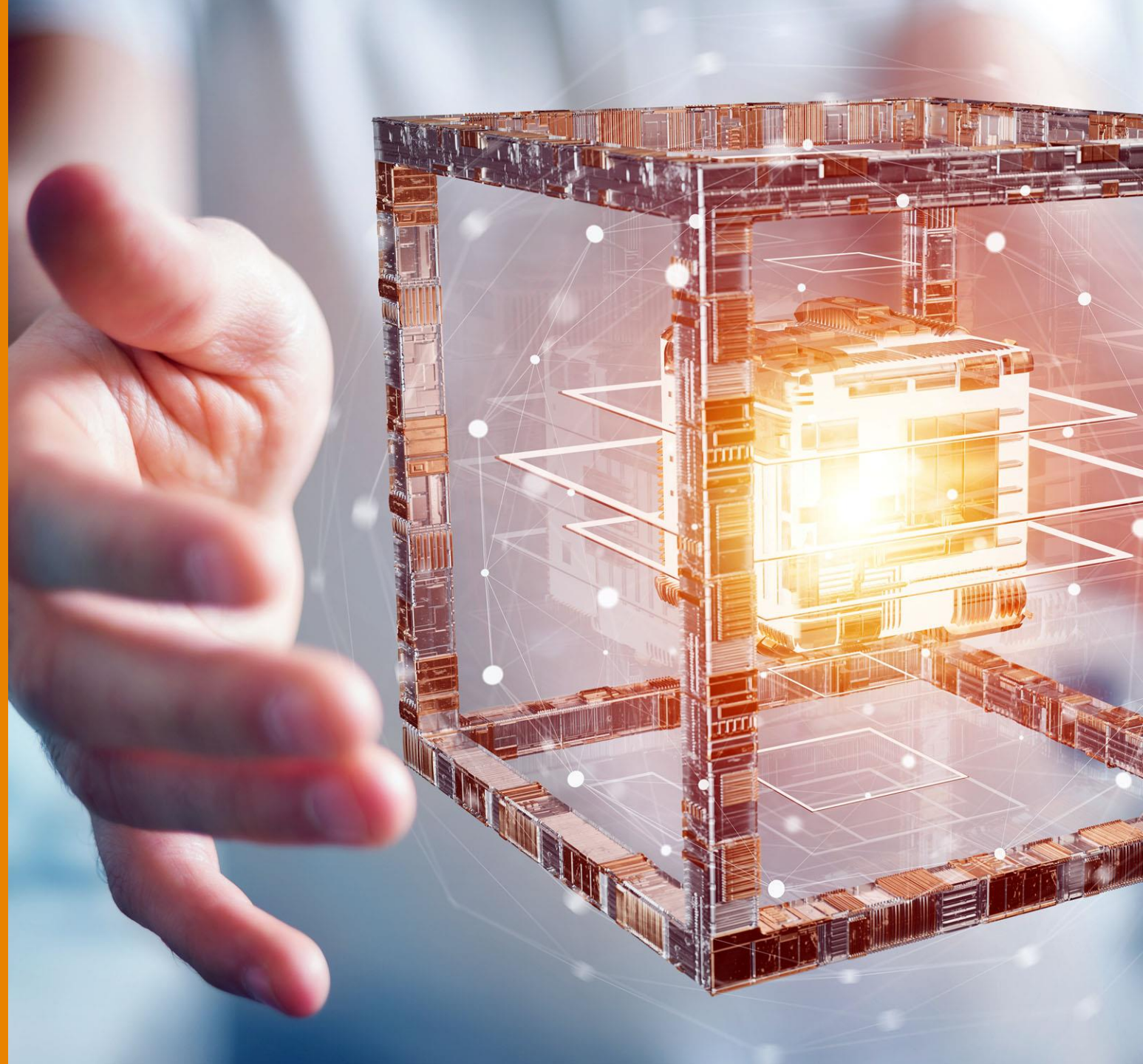


# DLT- Dynamic Leadtime Basic 123 Guide

Supplier Portal

<https://supplier.te.com/web/supplier-portal/home>

EVERY CONNECTION COUNTS



# After you receive the Email

If you have not received this email, please check if your Supplier portal contacts are up to date and create a support ticket through the portal

EVERY CONNECTION COUNTS

Subject: Dynamic LT Supplier Review Period - Opening for Jan/ Feb/ Mar 2022



Dear Supplier,

Friendly reminder, to please complete your review of the TE Dynamic Lead Time material numbers and submit for the Analyst's Review **Before** **Friday, February 4<sup>th</sup>**. The closing date is important since there are activities within TE that are dependent upon the completion of this activity.

At this point, our records show that the Dynamic LT information has not been reviewed and/or submitted back to the TE Analyst. If you have not yet started the review for this Quarter, please begin to review and update any incorrect Lead Times, if making a change to the current LT, enter LT Review Date to certify that you are agreeing to the stated Lead Time and enter your On-Hand Inventory quantity. Please complete as many records as possible.

NOTE: LT Review date will carry over from previous review cycles, only change the date if updating the LT's.

If you cannot review all the records? simply leave the original data and do not enter LT Review date. Suppliers can continue the review in the next cycle. **Final Step click the "Submit the Review" button.**

If you need assistance with the process, please refer to the on line help function.

Please sign on to the Supplier Portal: <https://supplier.te.com/web/supplier-portal/home>

1. Locate the "Inventory Management" selection block, typically located in center of screen
2. Select the "Dynamic Lead Time" link option
3. Access the on line "help" with the "?" icon to access the latest reversion of the documentation



If you are a first time user of the application, please begin by reviewing the on-line training material. Focus on... **Items 2 & 4 Word Documents and Item 6** (10 minute audio on monthly processing steps)

If you are a returning supplier from prior months, please **verify you have the printed the latest revisions** of the Word documents and refer **Item #6**, "Quick Ref-Supplier Monthly Process" to review the suggested processing steps.



# Step 1: Go to TE Supplier Portal

You need to complete this file as soon as you receive the first e-mail notification.

Make sure your submission is completed before the closing date.

EVERY CONNECTION COUNTS

The screenshot displays the TE connectivity Supplier Portal. At the top left is the TE connectivity logo. The top right shows a user greeting: "Welcome Monica Mayo" with a dropdown arrow. Below the logo is a navigation bar with tabs: Home, My Account, Documents, Supplier Resources (highlighted), Supplier Diversity, Support Center, and About Us. A dropdown menu is open under "Supplier Resources", listing: Supply Chain Management, Quality and Compliance, Inventory Management (highlighted with a red arrow), RFQs / RFPs / Auctions, Invoicing, and Manage Profile. To the left of the dropdown is a search bar with a "This Site" dropdown and a magnifying glass icon. Below the search bar is a "Check Invoice Status" section with input fields for "Invoice Number\*" and "Invoice Date\*" (format dd/mm/yyyy), a calendar icon, and a "Submit" button. A red banner at the top right states: "SDA & SDAA Applications will be unavailable on 19th Feb 2022 at 6:00AM-9:00A". Below the banner is a video player showing a person pointing at a world map with the text "RESPONSIBILITY" and "our suppliers to embrace... and comply with the same socially important values, principles and guidelines that TE operate with." and a "Learn More" button. At the bottom of the page are two tabs: "Announcements" and "Last Modified".

## Step 2: GO to Dynamic Leadtime Link

Will re-direct you to the Dynamic Portal Site

EVERY CONNECTION COUNTS



0 Welcome Monica Mayo ▾

### Supplier Portal

Home My Account Documents **Supplier Resources** Supplier Diversity Support Center About Us

Languages (言語 / 语言)



#### Inventory Management

The Inventory Management menu provides access to applications that provide real time on-hand inventory visibility to suppliers involved in supplier managed inventory processes. Other real time information also available include minimum and maximum level stocking plans as well as consumption history and forecast projections.

#### Vendor Consigned Inventory (VCI)

The VCI application provides the supplier with visibility into stock levels and goods movements. The application provides search and display capabilities for select information pertaining to receipt, consumption, and forecasting of vendor consigned inventory

#### Material Lister

The Material Lister application allows suppliers to display key attribute data for TE metal parts or TE polymer parts

#### Dynamic lead Time

The dynamic lead time exposes our inforecord lead times and World Class lead times to our Suppliers. The Supplier can also input an updated lead time into the application. In future, this lead time will update the inforecord in SAP



# Step 3: How to find Tutorial

**TE connectivity**

⚠️ No records found for the current search criteria

**Search Info Records**

Material:  Supplier Part No:   InfoRecord LT Violations **My Data** Supplier Id:  ALL

Plant:  Transit Method:   TE Targeted LT Violations  Analyst Supplier Id:

MRP Controller:  Purchasing Org:   Demonstrated LT Violations  Supervisor

Buyer:  Commodity Code:   Sup. Inventory Violations  Manager

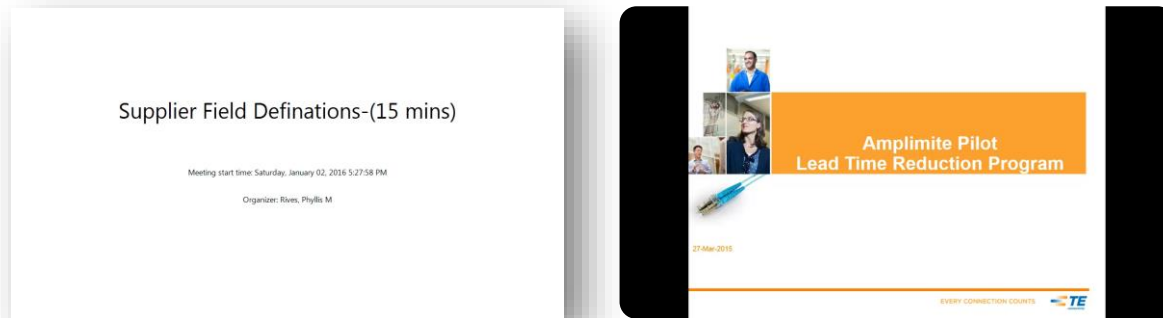
**Quick Actions**

- View Info Records
- My Downloads
- Supplier Review Status
- Analyst Review Status
- Mark Data - Analyst Reviewed
- Upload Review Status, MFG LT, Supplier Inventory on Hand and Employee Comments As Supplier
- Supplier Help**
- Admin Module



Site Currently supports Chinese, English and French

- [1. Audio-TE's System Outline - 4 Week Cadence](#)
- [2. Dynamic LT Field Definition - Word Doc](#)
- [2. Dynamic LT Field Definition - Word Doc \(Chinese\)](#)
- [2. Dynamic LT Field Definition - Word Doc \(Francais\)](#)
- [3. Dynamic LT Field Definition - Audio Training \(15 mins\)](#)
- [4. Supplier Process & Screen Navigation - Word Doc](#)
- [4. Supplier Process & Screen Navigation - Word Doc \(Chinese\)](#)
- [4. Supplier Process & Screen Navigation - Word Doc \(Francais\)](#)
- [5. Supplier Process & Screen Navigation - Audio Training \(20 mins\)](#)
- [6. Quick Ref - Supplier Monthly Process - Word Doc](#)
- [6. Quick Ref - Supplier Monthly Process - Word Doc \(Francais\)](#)
- [7. Quick Ref - Supplier Monthly Process - Audio Training \(10 mins\)](#)
- [8. TE Contact Names](#)
- [9. Screen Sharing Process - Word Doc](#)
- [10. SAP Plant# - Name and Location](#)



Video tutorials (English) – example of videos where you can find training how to complete the DLT

<https://esupplier.te.com/supplier/dlt/dltMain/dltHelp.htm>



## Q & A

---

Contact your Strategic Sourcing Specialist.

Thank you for your support!

**EVERY CONNECTION COUNTS**